



# COMPANY PROFILE



# Our Mission is to Improve Business's, Homes & Lives

We are not just another Fitout Company...

**We work for you!**

We treat every Fitout like it is our own.

Whether its Office, Warehouse, Shop & Retail...

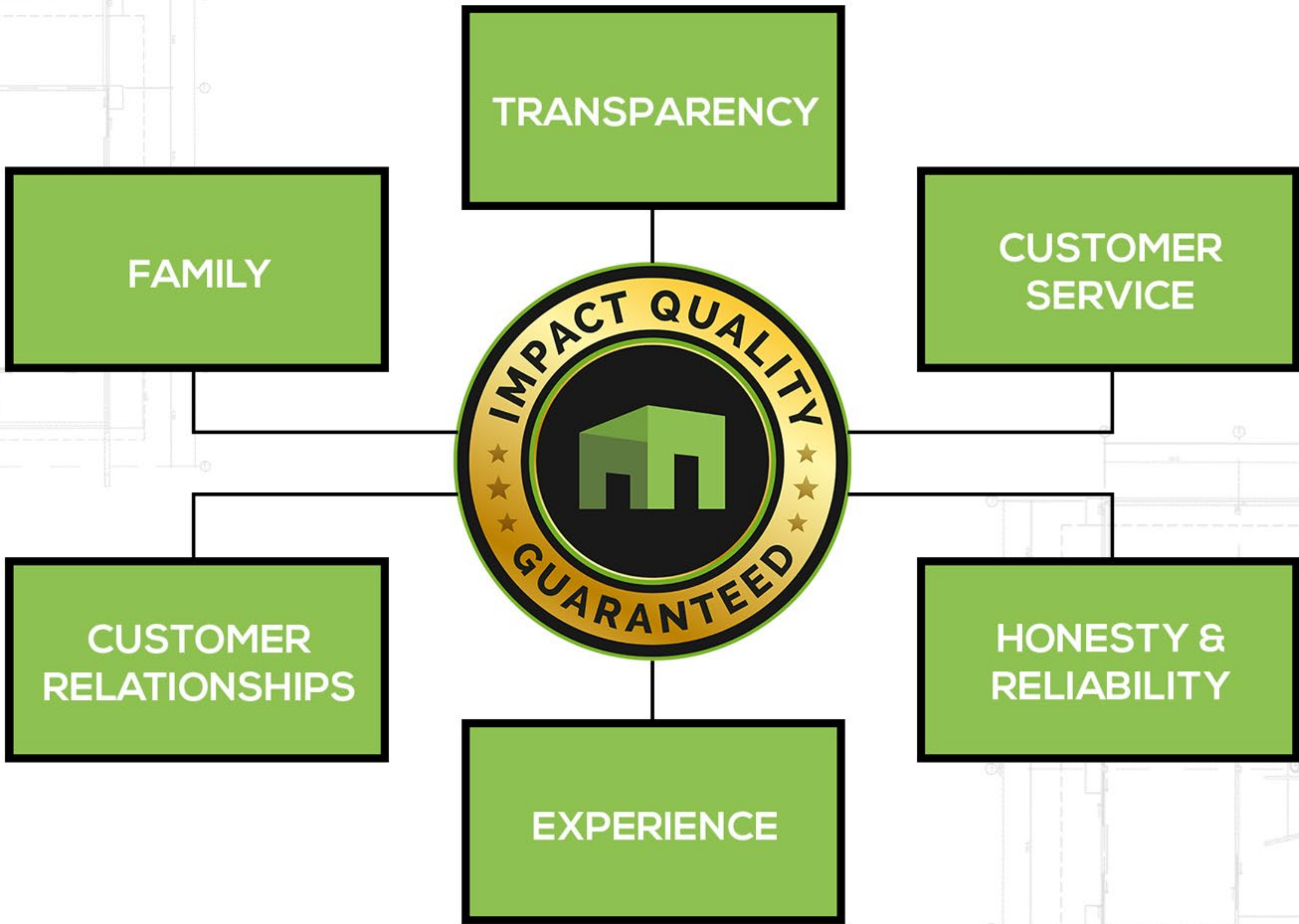
We are you Fitout Specialists!

# 28

Years of  
Widespread  
Construction  
Knowledge &  
Experience







TRANSPARENCY

CUSTOMER SERVICE

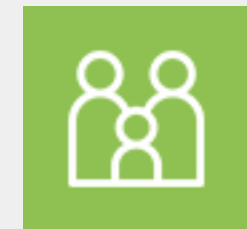
HONESTY & RELIABILITY

EXPERIENCE

CUSTOMER RELATIONSHIPS

FAMILY





## Family

Impact Fitouts is a Family based Construction Company, with 7 of our 13 Team Members family linked including our Directors, Core Office staff & Management crew, we are unlike any other Fitout Company in Brisbane. Being family based brings another dynamic to our team, with the same mutual goal there is always plenty of communication, understanding & cooperation. We are very pro Family Values with Mutual respect as a foundation. We invite in and share this openness to all of our wider team, welcoming each and everyone like family.



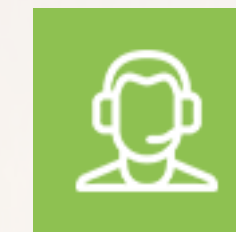


## Transparency

Full Transparency throughout the quotation is our policy, you will know exactly where each and every \$ will be invested on your project with Impact Fitouts. When John or Ilias are costing your Fitout, you will see each and every line item there is in their work out... As they calculate it, that's exactly what you will see. We like to do this to start our relationship with you with complete transparency. That way you know there are no hidden costs and you know exactly what we have allowed for, this also helps us guide you in getting the best fitout within your budget. You will be able to see how much each item costs, prioritising necessities and adding in feature items when fitting into your overall budget.







## Customer Service

Customer Service is where John & Ilias really come into their own. With the two directors working on your job & with customer satisfaction as their priority, you cannot get a better combination. Impact Fitouts will give you the best customer service in Brisbane, hands down. When you Engage Impact Fitouts you will automatically gain 3 points of Contact that know and understand your fitout – John, Ilias & Simon. John, Ilias & Simon are leaders in their fields and have known each other well from a very young age, they have also been in the Building industry together from a young age. The Impact boys not only care for each project, they discuss each fitout in depth on how to get the best possible Finish and Result. They live and breath Property making them the perfect Consultants for your fitout & your property.



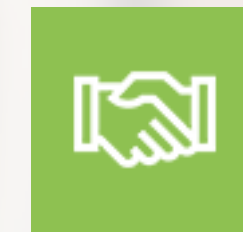


## Impact Quality Stamp Guarantee

Perfection is our direction at Impact Fitouts. Impact the company has been built from the ground up starting with John, Ilias & Simon on the tools themselves. As Impact Grew the expectation of high quality was drawn like a line in the sand. Each and every member of the Impacts Team has signed a contract stating that only a high level of products and service will be accepted & produced. If it doesn't have the Impact High Quality Stamp of Approval it gets flagged from within our quality control team and it does not get passed or handed over. This is our promise to you.

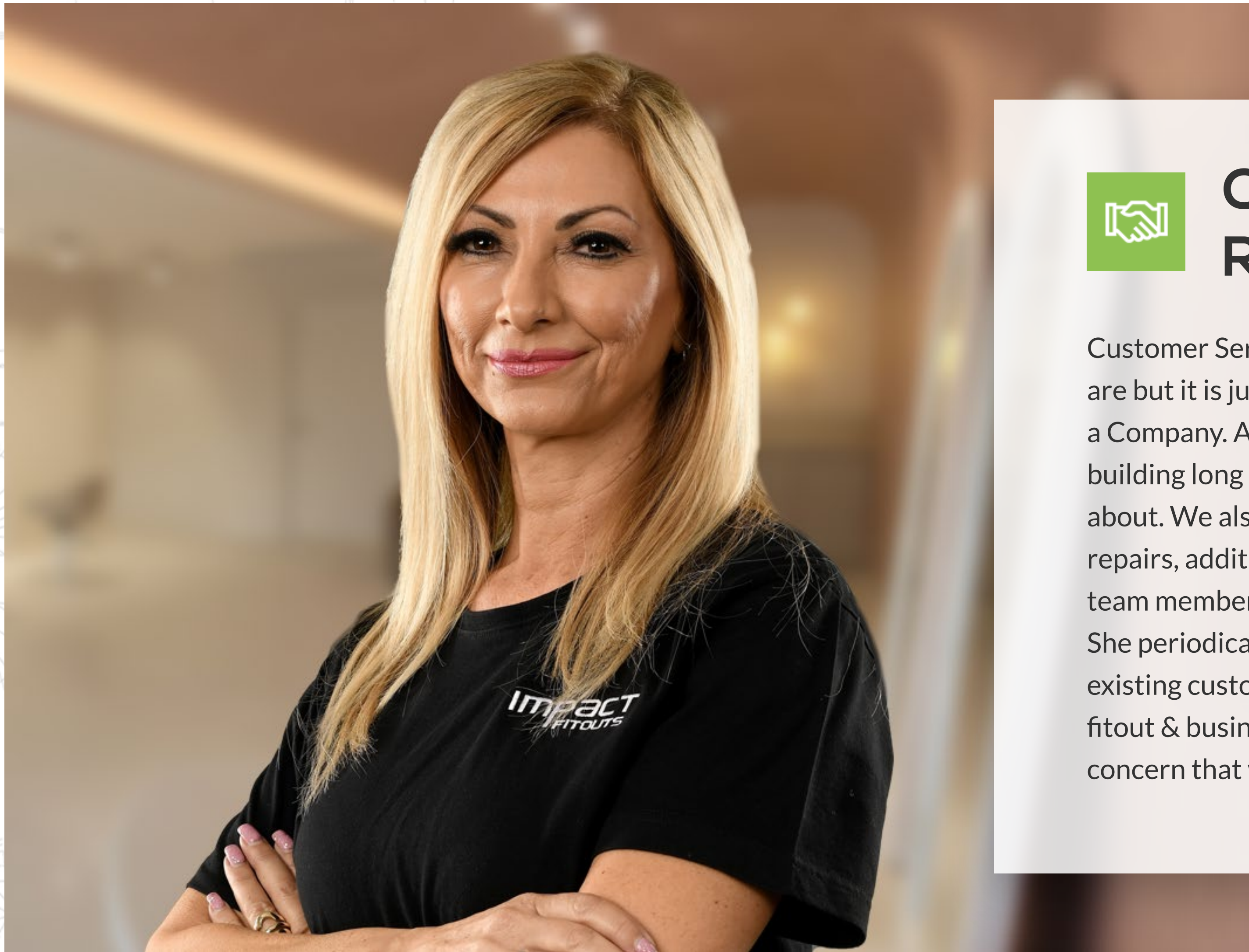






## Customer Relationships

Customer Service in the initial project is a major part of who we are but it is just one part of who Impact Fitouts is a people and as a Company. Although we are proud of our initial customer service, building long term customer relationships is what we are really about. We also pride ourselves on after sales, maintenance, repairs, additions, amendments & advice. We have one of our team members dedicated as our customer relationship manager. She periodically touches base with each and everyone of our existing customers to ensure all is travelling well within their fitout & business, also finding out if there is anything else of concern that we can help out with.





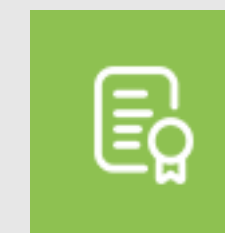


## Hard Work, Honesty and Reliability

We pride ourselves with our honest and reliability. When we commit to your fitout, whether it be large or small you will have our full commitment to delivering your fitout to the best of our ability and also within in the project timeline. Through Hard Work, Honesty & Reliability we will create the Impact you desire!







## Experience

Impact Fitouts are Licenced builders with John having a Carpenters and Builders licence & over 28years in the Construction Industry. Our project Managers have 30 & 35 years experience and are also trade qualified carpenters. With all our experts having Residential & Commercial Experience we are set up for any project that comes along. Our Team is long standing and many of us have worked together for over 25 years.



# WHO DO WE WORK FOR?



## Landlords and Investors

We can evaluate your existing or proposed building to see the possible enhancements that can be made. We work in with Commercial agents to establish the best strategies to uplift your building for additional tenancies and enhanced rentals giving you additional equity for reinvesting or for possible sales. If your building is a little run down and still has the previous tenants fitout still in place, we can complete the deficit / make good to open up the areas for ease of renting. While we conduct the deficit / make good we can spruce up the internal or external for maximum effect, minimal costs and fast rentals.



## Business Owners

As an additional service we will not only help you design your fitout, we will revisit your potential tenancy and mark out proposed walls, doors, reception, furniture etc on the floor for a full walk through so you can make sure the fitout works for you to the millimetre. We will take the required time to ensure your layout & floor plans are right so before we start construction is exactly how you want it. This is a Free Service we provide for you.



## Commercial Leasing Agents

### LANDLORDS AND INVESTORS

We can evaluate your clients existing or proposed building to see the possible enhancements that can be made. We work in with you to establish the best strategies to uplift the building for additional tenancies and enhanced rentals giving you additional equity for reinvesting or for possible sales.

### BUSINESS OWNERS

As an additional service we will not only help your potential Client design their fitout, we will revisit the tenancy and mark out proposed walls, doors, reception, furniture etc on the floor for a full walk through so that they can make sure the fitout works for them to the millimetre.